

ARTICLE TEMPLATE

## Estimation of Fog Utility Pricing: A Bio-Inspired Optimization Techniques' Perspective

Hafsa Arshad<sup>a</sup>, Hasan Ali Khattak<sup>a</sup>, Zoobia Ameer<sup>b</sup>, Assad Abbas<sup>a</sup> and Samee U. Khan<sup>c</sup>

<sup>a</sup>Department of Computer Science, COMSATS University Islamabad, 44000 Islamabad, Pakistan.; <sup>b</sup>Department of Physics, Shaheed Benazir Bhutto Women University, Peshawar 25500, Pakistan; <sup>c</sup>Department of Electrical and Computer Engineering, North Dakota State University, Fargo, ND 58105, USA.

### ARTICLE HISTORY

Compiled August 21, 2019

### Abstract

Due to the limited data storage capacity available to Internet service providers and large-scale enterprises, the concept of resource sharing arises. The services can be given on lease to enterprises through Service Level Agreements (SLAs). Being the extension of the cloud computing, fog computing architecture brings the resources near end users. In order to get the services on lease, the enterprises are supposed to pay for the resources or services which are being used by them. In this paper, four nature inspired algorithms are analyzed in order to determine the efficient management of services or resources so that the cost of resources can be reduced and the billing can be attained through calculation of the utilized resources. Pigeon Inspired Optimization (PIO), Enhanced Differential Evolution (EDE), Binary Bat Algorithm (BBA) and Simple Human Learning Optimization (SHLO) are used to evaluate the energy consumed by the edge nodes or cloudlets that in turn can be used for estimating the bill through the Time of Use pricing variable. We evaluate the aforementioned techniques to analyze their performance regarding the bill calculation on the basis of fog servers usage. Simulation results demonstrate that BBA algorithm gives significantly better results than other three algorithms in terms of resource utilization and bill reduction.

### KEYWORDS

Cloud computing; Fog computing; Bio-inspired Algorithms; Optimization techniques; Utility; Pricing

## 1. Introduction

In distributed systems, services or resources are shared among multiple systems which are kept in different locations but connected over a network to work on a single goal. Distributed computing maximizes the performance by connecting users and resources in a cost-effective and reliable manner. It also ensures fault tolerance and resource accessibility is enabled if one of the components fails. Cloud computing being considered as the type of distributed computing, involves the services which are available to users from remote locations. Cloud computing is an emanating computing architecture that depends on shared computing resources to manage applications in spite of having

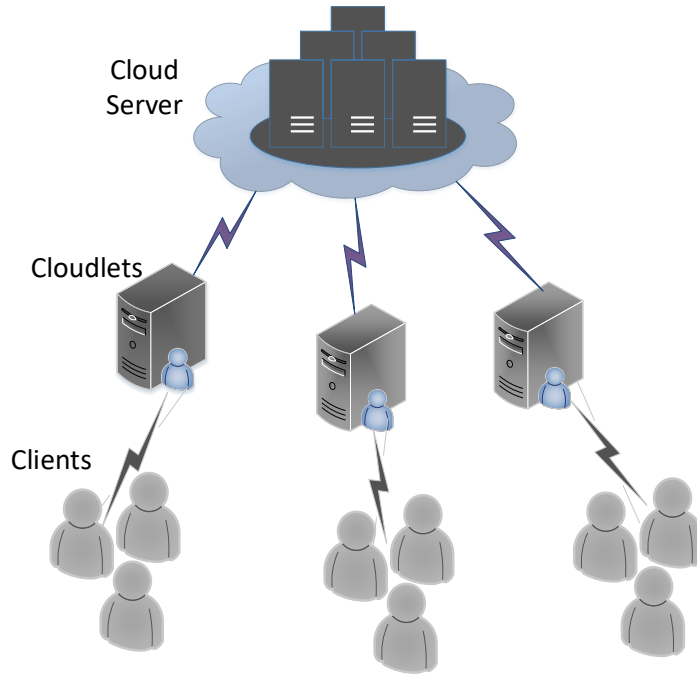
local servers. Cloud computing enables the end users to utilize several resources and services, such as storage and processing through the Internet. The on-demand delivery of the IT resources is assured by accenting the services via pay as you go model. The service providers are paid by the cloud customers for providing the services to the end users.

A user can utilize many services when they are required immediately just by billing for the ones they are consuming. Moreover, cloud computing can be viewed for eradicating the charges of developing and maintaining the IT structure for small-scale and medium-scale firms. Because of few deep-rooted issues various softwares cannot seem to operate efficiently in cloud system. Like; the information and data cannot be transmitted to a cloud at the same rate which was at production simultaneously because of low bandwidth. Hence, notable delays are experienced which cannot be borne in some cases. The idea of fog computing was launched, in order to minimize the antecedent delays and to make sure about the efficient allocation of resources. Due to fog computing it has been witnessed that several issues related to distributed computing had been overcome. These issues include ineffective resources management, quality of service (QoS) and security problems. Fog computings data is managed restrictively in an implicit environment at a faster momentum than in the integrated unified cloud server.

Fog computing idea was put forward by Cisco Systems, which smooths out the process of wireless transfer of data in the Internet of Things (IoT) model by pulling the computing potential closer to fringe of a network to make the vigorous access for machines. The primary aim of fog computing can be to increase the efficacy and eradicate major data transference to the cloud for examining, storage and for different operational motives. The major advantage can be the lower inertness for machines and lower network charge on foundation of the internet. There can be multiple app arenas of the fog computing which include, smart grid, smart buildings, software-defined networks and smart buildings[8]. The extended empirical operations happen in the cloud system, though temporary data processing that is held at the edge nodes/fog servers. It would be wrong to assume that fog computing is an alternative of the cloud. However, it accompanies cloud by minimizing the sent data to the cloud through the internet foundation.

Aforementioned, fog computing minimizes the load of sent data and it conserves the network bandwidth accordingly. With this, it also revamps the response time of the system by placing the data closer to the verge of the matrix and formulating the immediate availability of data. Fog computing also reduces the latency.

The firms outsource the facilities through the fog facilitators for their services. However, it is essential to effectively and efficiently allocate the resources to minimize the rates and costs. One of the ways of cutting these costs can be done through consuming the resources optimistically via Terms of Use (ToU) paradigm which is already applied affluently. We can take a usual exemplar to demonstrate the case of smart homes where bill is calculated for the energy consumption by smart meters[3,30]. Figure 1 illustrates the basic 3-tier architecture of cloudlets. The server is situated in the top tier. The middle layer represents the application tier which consists of cloudlets. Lastly, the final tier shows the clients. The cost and the optimal scheduling energy can be controlled the clients. A required estimate of the rates of expended resources has been increased because of the rise in demand of cloud services. Now, we can hire Pigeon Inspired Optimization (PIO), Enhanced Differential Evolution (EDE), Binary Bat Algorithm (BBA) and Simple Human Learning Optimization (SHLO) to keep an estimate of the accounts on the point of the power used by cloudlets. Because of this



**Figure 1.** A General 3-Tier Architecture for Fog Enabled Cloud computing [8].

resource utilization or consumption can be altered through the pricing signals.

This paper is the extension of "Evaluating Bio-Inspired Optimization Techniques for Utility Price Estimation in Fog Computing" [6] in which two bio-inspired techniques; PIO and EDE are used. In this paper, we have employed two more optimization methods i.e., BBA and SHLO along with PIO and EDE. This is to know the best solution for the billing estimates based upon the consumption of cloudlets. Besides this, ToU pricing indication has also been executed which examines the utilization of the system efficiently and reduces the overall rates which will be beneficial for service providers as well as the clients. ToU rate plan lets the user determine how much and when the energy was consumed and likewise consumers can save their operational costs. EDE uses trial vector strategy[4,5] while PIO uses the homing behavior of pigeons[4, 5,12] in order to acquire the optimal solutions. The echolocative behaviour of bats is used in the BBA [25,41? ] while human learning mechanisms is used in SHLO[36] to obtain the optimal solution. The reason of selection of these techniques is that they perform better than many other techniques. BBA performed better than PSO, GA and PIO[4–6] and PIO outpaced EDE in[28,40]. These optimization algorithms perform better than other algorithms in terms of approximating the cost and resource which are being utilized.

The remaining article is compiled accordingly. Related work is presented in Section II, proposed system is presented in section III, section IV represents the results of the proposed model and lastly section V gives a conclusion and future limitations.

## 2. Related Work

Fog computing is a formative computing mechanization because of which many researchers are exploring it and the cloudlet resource management. Papers literature review consists of the cost estimation methods for estimating the consumption of cloudlet accumulation bills.

The researchers in [28] presented a cost planning algorithm. Its aim was to maintain a balance between the execution of application and the cost of utilizing the cloud resources. This proposal can also be used for the massive scale applications for energy efficiency. The authors in [40], presented greedy algorithm for Basic Service Placement Problem (BSPP) and Cost Aware Service Placement Problem (CSPP). The major objective of the proposal was to aid service facilitators in minimizing the access latency and lower the cost of consumption of resources and placement costs on cloudlets for service providers. One issue with this is that the privacy of the users adaptability is neglected. In [33], the authors have presented a Cost Deadline Based (CDB) model to ensure that the tasks are scheduled with cloudsim. Its main aim is to minimize the ratio of overlooked deadlines and help in defining the costs of users and service providers. Resources are not efficiently allocated in this model.

In [16], the authors have presented a heuristic model based on cloud pricing model. This work lowers the amount of required VM instances and acquires a cost discount along with ensuring the users of SLA. Relatively, 30% of the cost has been reduced. However, this work does not consider the operational and communication costs of the task. In [1], the researchers has proposed priority based load balancing perspective which aligns the VM to the averages allocated to every VM. The goal of aforementioned work is to make the improved services readily available for the people who are letting the service providers earn more revenue. The disadvantage of this model is that threshold figures are used. Aslanpour *et al.* in [7] has proposed cost saving super professional executor (Suprex) with auto scaling processing. The aim of this model is to facilitate an implementer with an advantage to hide the bonus VM until the calculated time is suspended to resolve the problem of terminated VM startup. This implementer decreases leasing costs of VM relatively by 7%. In few cases it may result in reduced consumption. In [2], a model for modified resource planning and forecasting with reference to characteristics and traits of a user is presented by a cloud broker in the virtual federation atmosphere. QoS is neglected in this model. In paper [19], authors have presented a Science Gateway Cloud (SGC) platform and a cost adaptive resource management plan amidst by work-flow allocating plan with a division policy. However, cost performance is degraded when resources are inefficiently managed.

In [21], the aims of authors are to reduce the cost for every element and the overall calculation for the user and CSP both. Energy rate reduction algorithms are proposed in this work. Multiple CSPs can be used to improve the quality of services. The researchers in [20] have presented dual side dynamic control algorithms for cost and postpone tradeoffs for users and CSP in MCC for which both non-cooperation and cooperation situations are made under consideration. QoS and the deadlines are neglected in this work.

In [10], Cheng *et al.* has proposed a deep reinforcement learning (DRL) model which does resource allocation and chore plans to reduce energy costs for CSPs with a massive number of customer demands and huge data centers. ToU and RTP can be the pricing indicators used in this work together with Pay-As-You-Go billing method. Energy cost effectiveness can be enhanced by 310% and 140% minimization in runtime can be attained. While dealing with a huge number of user requests, many dependencies

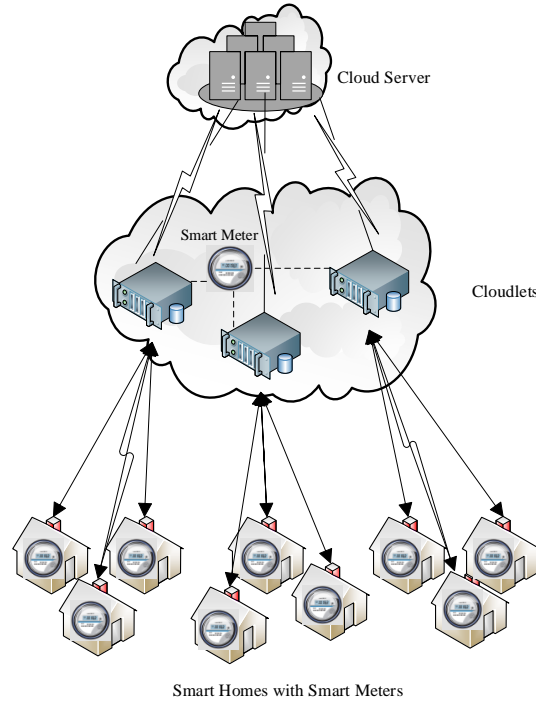
are included. The authors in [17], have presented a mathematical model for strong on demand pricing framework using laaS cloud service instances by keep the users and providers utility in mind. Genetic algorithms are used for optimal approximation and reduced execution cost. Strong behavior of a network cannot be analyzed by this model. In [31], authors have proposed the balanced load with optimized cost planning algorithm to reduce rates and operating strength. The requests that have been already accommodated are scheduled again to make room for the new requests at CSP. This aforementioned algorithm is unable to be compatible with the VMs when they are occupied in data centers and the latest demands are in queue.

[22] Proposes a negotiation-based iterative approach for task scheduling (NBTS) that is used to reduce the billing strong energy costing. 51.8% enhancement in electric bill minimization is achieved. [23] Is the extension of [22] since they both address the same issue. The authors in [23], have proposed a negotiation-based cost minimization (NBCM) method to lower the user costs. The objective of this work is scheduling the electricity consumption so that the users electric bill can be reduced. The overall cost reduction achieved is of 64.22% in comparison to the other methods. Both have illustrated the dynamic energy costing which includes ToU and total power consumption dependent.

The researchers in [27], presented a framework to modify the resource consumption and price minimization through strong VM allocation in cloud. 16% total is reduced through this model. Anyhow, further enhancements can be made. In [37], an admission cost framework is presented for showing various resource utilizations. The aim of this effort is to improve the model within cloudlet environment. The authors in [35], has proposed an extension in storage for the existing clouds to use simulations of storage as a service (STaas) components. For the reliability of this extension, resource allocation and costs are evaluated. However, this model has no process for working with complicated SLAs and definite value-models are not utilized. In paper [42], the authors have presented a VM placement plan that solve optimal price issue beside this the rescheduling of VM for utilization-aware trends are also presented. The aim of such model is to reduce the operation cost to lower the degraded performance than required threshold. Cost oriented model (CoM) is presented in [9] to align cloud technology resources optimally for demand by the parted management. This is done to lower the rent cost of cloud resources. In [34] QoS metric based resource allocation techniques are proposed for the reduction of cost of cloud workloads and implementation time with QoS horizons. This consumption can be further improved. The researchers in [43] have presented a virtually effective algorithm for strong joint VM costing, planning of job and server allocation including geo distributed data-centers to optimize the revenues of the owner of the cloud. However, these backup resources are costly.

In [32], the algorithm stabilizes the load efficiency in VMs by allocating tasks with reference to the exploring attitude of honeybees. It also reduces the cost of using VM instances. However, the loads of the dependent projects are neglected in this work. An effective dynamic scheduling and pricing (DynSP) algorithms for delays is proposed in [29] to increase the revenues of the service providers. This algorithm can only work with two service classes. The researchers in [38] have presented bi-level cost optimization idea to plan the usage of energy cost of customers in order to gain the optimum performance. This work has neglected the security. In [11], authors have presented the optimum cost algorithms, in order to examine that which resources are supposed to be leased from local clouds to follow the work-flow implementations with deadlines. The authors in [26] have proposed cost-based resource scheduling approach which will optimize the profit of providers and it will also use some techniques to balance

the load. Its aim is to reduce the overall cycle time and enhance the profit of service facilitators and making the customers satisfied by giving first priority to those who have already paid the service providers for the consumed resources. The only disadvantage of this model is that the figures that are taken are from static threshold. Yang *et al.* have presented a dynamic resource scheduling model in [39] for NFV enabled MECs which include fast virtual heuristic based incremental scheduling processes and a better optimal way. The main objective of article is to effectively schedule resources from NFV enabled MECs so that reduced latency and cost-efficiency is attained. Relatively, 33% cost can be reduced by this work presented but this cannot aid multiple services which require different performances. In [15], a numerical framework of cloud computing is presented with reference to the economic fractional dynamic function. This enables the broker to individually optimize the overall cost which involves the execution cost and the costs of efforts while incurring switches to cloud computing. We cannot deny the fact that economic systems are relied on other various factors too. The authors in[24], presented a cloud computing simulation framework of smart grid applications, which will examine the VM/cloudlet patterns, cost forecasting and the operating time of smart grid projects. In this work security is ignored.



**Figure 2.** Proposed Architecture for our Cloudlet based design adapted from [8].

### 3. Proposed Methodology

In the above proposed work, we will exercise the PIO and EDE as well as the ToU pricing model to make an estimate of cloudlet utilization costs. This project can only be achieved when we examine the energy that is being used by smart homes, cloudlets or fog machines. Figure 2 illustrates the aforementioned planning of cloudlets. Top tier shows the placement of cloud server. Some cloudlets have been interconnected with a smart meter to look at energy utilization for billing estimates later on. The bottom tier consists of smart homes that are inter-related to smart meter. All the information that is acquired via smart meter about the consumption of energy is transferred to the cloudlets. Later, the techniques for optimization are used and optimal allocation of power usage from smart homes and cloudlets are examined. This information is transmitted via smart homes to cloudlets which calculate the overall energy usage cost. This cost can be determined by estimating the number of resources consumed by homes or clients. The Pay-As-You-Go pricing framework is executed in order to do the cost estimations of resources consumed. The optimal plan that is acquired in this work, estimates the lowest optimal cost of cloudlets. The users can keep a check and manage the cost and energy utilized by enhanced planning. Four techniques are used for optimal planning namely PIO, EDE, BBA and SHLO.

#### 3.1. Working of optimization techniques

The functioning of algorithms used for bill estimation is explained in the following section. The algorithms will give the explanations for the usage of the four bio-inspired methods in our case.

##### 3.1.1. Pigeon Inspired Optimization (PIO)

This originated by the idea of homing attitude of pigeons and this was presented in 2014 by Duan and Qiao [12]. This model is used because of its good optimum performance a high merging speed that is the top advantage of PIO [18]. Map & Compass Operator and Landmark Operators are the two important operators that are used in this case.

###### a) Map and Compass Operator

Firstly, each and every criterion is given a name and the sample is created randomly. The consolidation of the pigeons (cloudlets and homes) is measured. Magneto-receptors are used to examine the magnetic fields of earth which are plotted in the brains of pigeons. The scope of sun compasses to fix their directions. Pigeons are likely to be less dependent on sun and the magnetic elements as they proceed to their destinations.

###### b) Landmark Operator

The Pigeons flutter to their destinations in this operator by depending upon the landmarks which are adjoining or neighboring. The pigeons fly directly to their targets if they are well aware with their landmarks. Whereas, if the pigeons are not familiar with the landmarks then the ones who are familiar are tracked. The fitness function states that all of the population is arranged, even in that half of it cannot use the landmark operators. This is how we will look for the optimal solution i.e., bill estimation.

Algorithm 1 illustrates the PIO technique. Few of the operations are acquired from [12] where  $X$  denotes the position and  $N_j$  denotes the amount of pigeons.  $X_c$  denotes the global optimal output of fitness function.

---

**Algorithm 1** Pigeon Inspired Optimization

---

Initialize Parameters

Set initial path  $X_a$  for each cloudlet or fog device

Set  $X_b = X_a$ ,  $N_i = 1$

Estimate fitness of cloudlets or fog devices

Find best solution

Map and compass operations

**for**  $N_i = 1$  to  $N_{i1max}$  **do**

**for**  $a = 1$  to  $N_j$  **do**

**while**  $X_a$  is beyond search range **do**

            Compute  $X_a$  and  $V_a$

**end**

**end**

    Calculate  $X_a$ , and update  $X_b$  and  $X_c$

**end**

Landmark operations

**for**  $N_i = N_{i1max} + 1$  to  $N_{i2max}$  **do**

**while**  $X_b$  is beyond search range **do**

        Sort all available fog devices according to fitness values

$N_k = N_k / 2$

        Retain half of fog devices with desired fitness values and discard other half

$X_d =$  average of rest of fog devices    Compute  $X_a$

**end**

    Evaluate  $X_a$ , and update  $X_b$  and  $X_c$

**end**

$X_c$  is output of fitness function

---

---

**Algorithm 2** Enhance Differential Evolution

---

Initialize parameters

Generate new population randomly

**for**  $x = 1:T$  **do**

    Estimate initial fitness (cost)

    Conduct mutation

**for**  $y = 1:Max$  **do**

        Estimate fitness

        Conduct crossover

        Create five trial vectors using different crossover rates

        Find best trial vector  $I_{new}$

**end**

    Perform selection

**if**  $(I_{new}) < (I_{worst})$  **then**

$I_{worst} = I_{new}$

**end**

**end**

---



### 3.1.2. Enhanced Differential Evolution (EDE)

Storn and Price presented this algorithm in 1997 for resolving the complicated optimization issues [14]. However, in the improved version trial vector approach is used to improve the efficiency. To find ideal solution, mutations are done beside creation of mutant vector and target vector. Five test vectors are created with unique crossover rate values. By using three unique crossover rates, we get first three test vectors. Uniqueness of search space and convergence pace is improved by fourth and fifth test vectors, at the same time. Subsequently, selections start to take place. Test vector with lowest objective figure is to be determined from those five test vectors a final test vector is determined.

Algorithms 2 illustrate the working of EDE where fitness is said to be the cost and the optimal trial vector is going to be the one with lowest cost.

### 3.1.3. Binary Bat Algorithm (BBA)

This was presented by Xin She Yang in 2010 [41] for solving the complicated optimization issues. Influenced from the echo-locative attitudes to bats, global optimization is held. BBA which is the binary version of BA [25] uses simulated bat hunting and navigating in binary search spaces by shifting their places between 0 and 1 value. Bats use intuitive sonar to hunt and navigate. Bats lower their loudness and increase the emission rate of ultrasonic sound when they are about to chase the prey. BBA is manifested and renowned for producing competitive results in comparison with Particle Swarm Optimization (PSO) and Genetic Algorithm (GA) with reference to confluence pace and enhanced local optimal avoidance [25], [13]. Mirjalili *et al.* stated that BBA has high convergence speed with improved performance in determining global solutions.

---

**Algorithm 3** Binary Bat Algorithm

---

Initialize Population

Initialize Pulse rate and loudness

**while**  $itr < maxitr$  **do**

    Adjust frequency and update velocities

**if**  $Rand > pulse\ rate$  **then**

        Select Gbest randomly and change some of the dimensions of position vector  
        with Gbest

**end**

    Generate a new solution randomly

**if**  $Rand < loudness \ \& \ f(population) < f(Gbest)$  **then**

        Accept the new solutions and update pulse rate and loudness

**end**

    Rank the bats and update Gbest

    Update position

**end**

Evaluate fitness

---

Algorithm 3 illustrates how a BBA works where fitness is said to be cost and Gbest is said to be the lowest cost.

### 3.1.4. Simple Human Learning Optimization (SHLO)

This model stimulated through human assimilation mechanisms. Three learning operators are formed to bring solutions and determine the optima by emulating the as-

simulate attitudes of humans. The operations of SHLO are validated and findings are compared with Binary Particle Swarm Optimization (BPSO), Modified Binary Differential Evolution (MBDE), Adaptive Binary Harmony Search Algorithm (ABHS) and Binary Fruit fly Optimization Algorithm (BFOA). The results after the experiments shows that SHLO does significantly a better job than ABHS, MBDE, BPSO and BFOA[36]. Taking into account, the simplicity of execution besides the importance of global search ability, SHLO proves to be a committed modifying technique.

---

**Algorithm 4** Simple Human Learning Optimization

---

```

Initialize Population randomly
Calculate fitness of each individual
while itr terminated do
| Output result
end
Generate a new generation
Calculate the fitness of new individuals
Update the population

```

---

Algorithm 4 demonstrates the working of SHLO algorithm where fitness is considered to be the cost and the output result gives the minimum cost.

#### 4. Simulations and Results

To evaluate the nature inspired algorithms for the purpose of bill estimation, MATLAB is used. A cloud computing environment is created in MATLAB, in which thirty fog nodes are used which are sending request to three cloudlets with round the clock operational time to acquire the simulation results. From fog node 1 to 6 requests are send to cloudlet 1. From node 7 to 11, the requests are send to cloudlet 2. However, from fog node 12 to 30, the requests are send to cloudlet 3. Simulations are conducted by considering different values of power consumption along with operational time (LOT) of the cloudlets in which resources are being consumed.

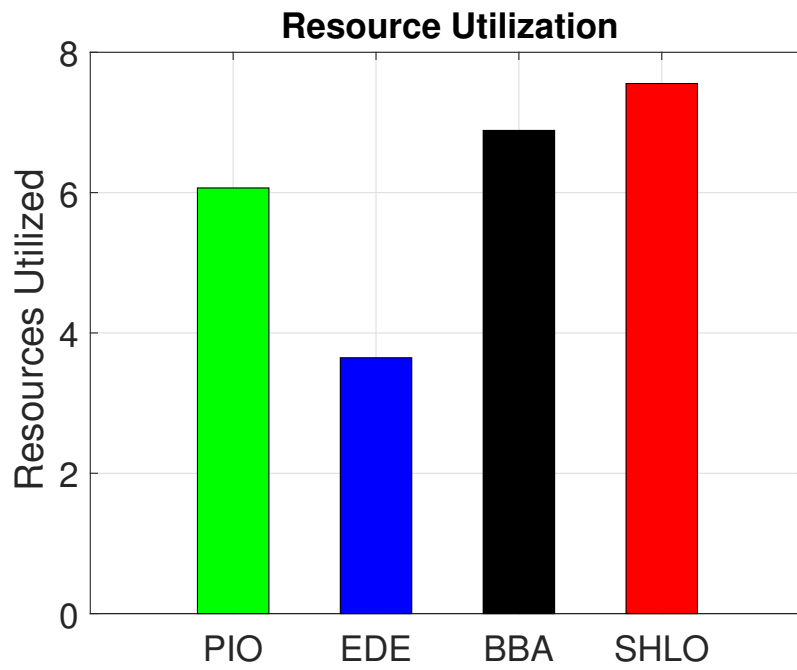
Along with the nature inspired techniques including PIO, EDE, BBA and SHLO, ToU pricing signal is used to reduce the cost of the cloudlets. The cloudlets are scheduled in a way that resources are efficiently utilized which leads to the overall reduction in bills.

Figure 3, shows the resource consumption of the users. Higher the number of resources utilized, higher will be the cost. Results depict that EDE utilizes least amount of resources as compared to other three algorithms. About 90% of the resources can be utilized by SHLO while 80% of the resources can be utilized by BBA algorithm. PIO can utilize 65% resources. However, EDE can utilize only 45% resources approximately. As SHLO can acquire more amount of resources, hence, this will lead to user satisfaction as more amount of resources can be acquired by the consumers.

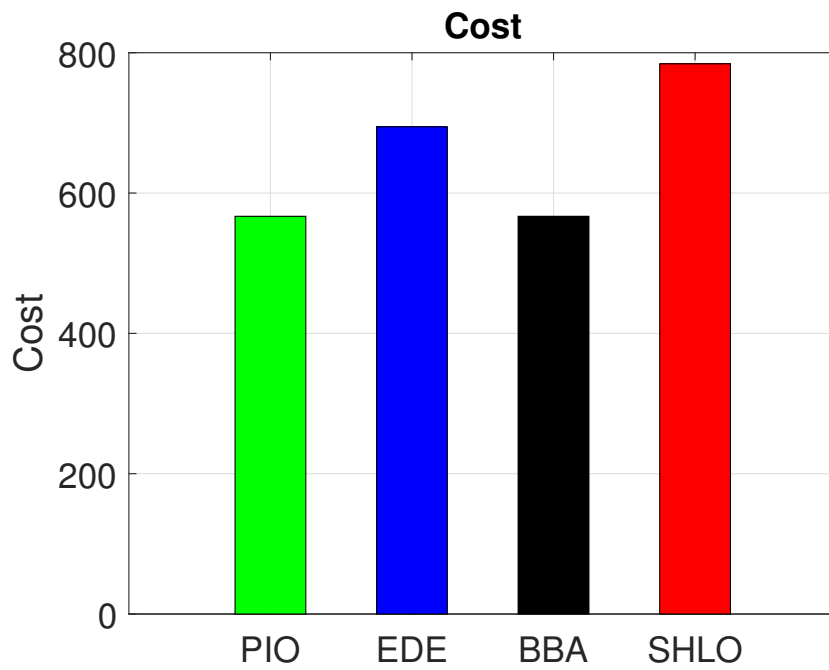
In Figure 4, cost of the utilized resources is given. Consumers have to pay for the resources they utilize. This shows that SHLO has the highest cost. This is so because SHLO can utilize more amount of resources as compared to other three algorithms. Although EDE acquires least amount of resources inspite of that the cost of EDE is higher than PIO and BBA. This is because EDE is able to acquire only limited amount of resources, however when it is given maximum load it's cost increases many folds. BBA algorithm is the most cost effective algorithm as it acquires more resources with

**Table 1.** Power consumption and operational time

Fog Nodes	Power Consumption (kWh)	LOT
Fog node 1	0.5	5
Fog node 2	0.9	9
Fog node 3	0.8	8
Fog node 4	1.1	10
Fog node 5	0.3	13
Fog node 6	0.2	20
Fog node 7	0.7	19
Fog node 8	1.3	7
Fog node 9	1.1	11
Fog node 10	0.8	2
Fog node 11	1.0	17
Fog node 12	0.15	7
Fog node 13	0.11	3
Fog node 14	0.2	8
Fog node 15	0.5	5
Fog node 16	1.1	15
Fog node 17	0.1	6
Fog node 18	0.2	4
Fog node 19	1.8	8
Fog node 20	1.15	10
Fog node 21	0.6	7
Fog node 22	1.3	12
Fog node 23	0.4	9
Fog node 24	0.3	16
Fog node 25	1.1	5
Fog node 26	1.13	3
Fog node 27	1.0	8
Fog node 28	0.9	10
Fog node 29	0.2	12
Fog node 30	0.1	7



**Figure 3.** Comparison of Resource Utilization for PIO, EDE, BBA and SHLO



**Figure 4.** Comparison of Utilization Cost for PIO, EDE, BBA and SHLO

least cost.

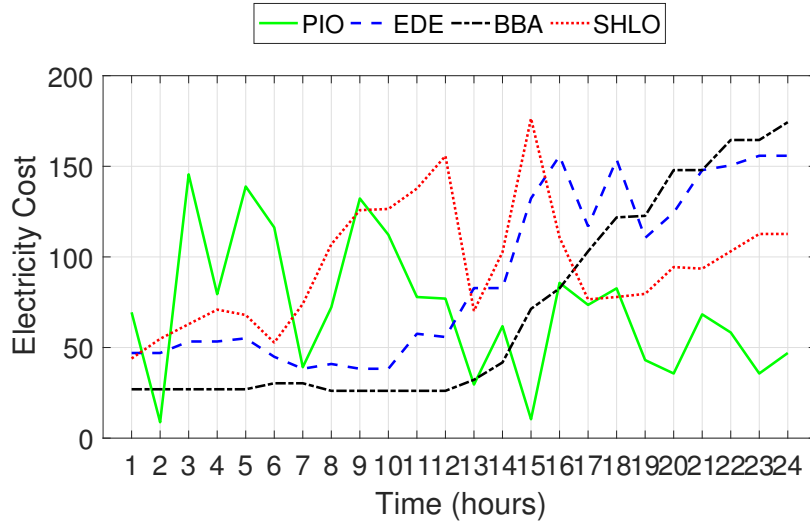


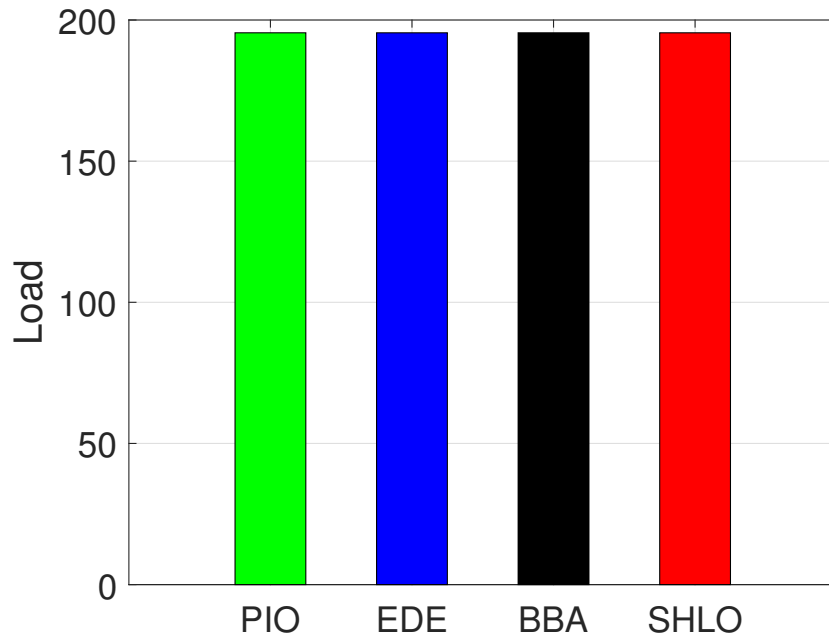
Figure 5. Hourly Cost for the simulation

Figure 5, represents the hourly cost of the resources utilized by the consumers. The highest peaks, round about 170 cents, are formed by SHLO as shown in figure. The peaks formed by EDE are 10% less than that of SHLO. Likewise, the cost of PIO and BAT algorithms is less than the other two algorithms comparatively. BBA has the lowest cost throughout while increases as the number of resources utilized exceeds. From 6 it is clear that all the four algorithms are bearing equal amount of load. Power consumption and LOT values are same for all the techniques. Under this even distribution of load, all these techniques are compared and evaluated.

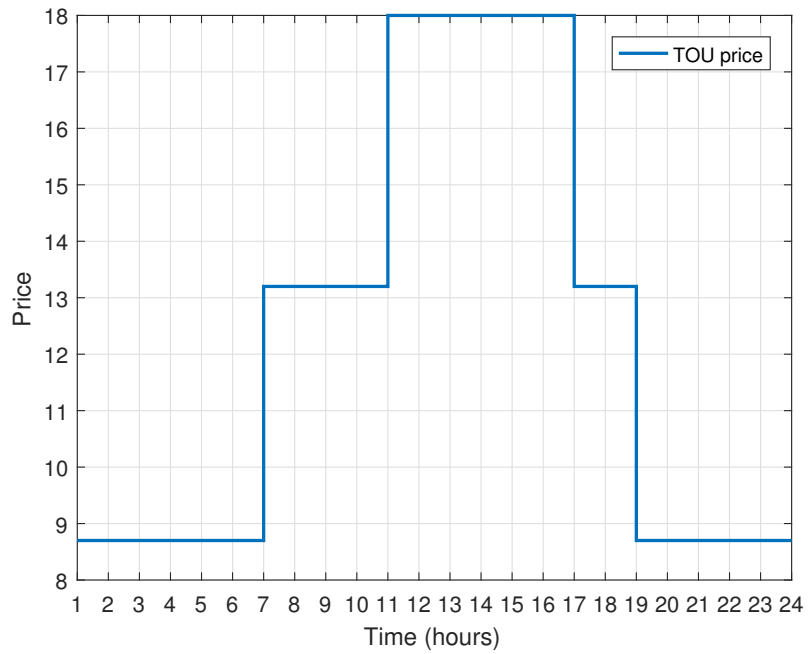
Figure 7, shows the ToU pricing signal which is used for estimating the costs. By using this pricing signal, consumers can manage the overall consumption cost and consequently bills can be reduced.

## 5. Discussion

On the basis of usage of cloudlets, four bio-inspired techniques that is, PIO, EDE, BBA, and SHLO were evaluated. These four techniques along with ToU pricing signal is used for estimating the bills. Evaluation results show that BBA outperforms other three algorithms in terms of maximum resource utilization and minimum cost. Although SHLO can utilize large amount of resources, mean while the cost is also very high. EDE can acquire least amount of resources with high cost. However, PIO can acquire little less resources than BBA. Consumers have to pay for the resources they are utilizing. Hence, considering this scenario BBA performs better than other three algorithms as it acquires large amount of resources with low cost.



**Figure 6.** Total Load for the simulation



**Figure 7.** Time of Use Pricing Signal

## 6. Conclusions

In this paper, four nature inspired algorithms were evaluated and compared in terms of their performance regarding the estimation of utility charging on the basis of usage of cloudlets. The PIO, EDE, BBA and SHLO along with the ToU pricing signal were employed for bill estimation. The evaluation is performed based on the resources utilized by the consumers and thus their hourly consumption cost. Simulation results show that the BBA algorithm can acquire more resources with least cost. Large amount of resources can be utilized by SHLO, therefore, it has a higher cost as compared to other three algorithms. EDE utilizes least amount of resources with much higher cost. From the simulation results, we also conclude that the BBA performs better than other three algorithms in terms of both resource utilization and bill reduction. These approaches lead to bill estimation based upon the usage of cloudlets. In the future, we intend to study and experiment with the other significant Bio-Inspired optimization algorithms, such as Particle Swarm Optimization (PSO), Bacteria Foraging Optimization Algorithm (BFOA), Earthworm Optimization Algorithm (EWOA) and the Evolving Bat Algorithm (EBA) for utility pricing where the simulations would be carried out in a controlled environment established in dedicated simulator such as the iFogsim.

## Acknowledgements

We are thankful to Prof. Dr. Nadeem Javaid for providing a vision and for his continuous support while conducting this research work. The work of Prof. Dr. Samee Ullah Khan is based upon work supported by (while serving at) the National Science Foundation, USA. Any opinion, findings, and conclusions or recommendations expressed in this material are those of the authors and do not necessarily reflect the views of the National Science Foundation, USA.

## Disclosure statement

We do not have any conflicts of interests.

## Funding

This work is partially funded under Higher Education Commission, Pakistan Start up Research Grant Projects (21-1004/21-1122/21-1675).

## References

- [1] Trapti Aadkane and Sandeep Monga. An energy efficient cost aware virtual machine migration approach for the cloud environment.
- [2] Mohammad Aazam and Eui-Nam Huh. Broker as a service (baas) pricing and resource estimation model. In *Cloud Computing Technology and Science (CloudCom), 2014 IEEE 6th International Conference on*, pages 463–468. IEEE, 2014.
- [3] Muhammad Raisul Alam, Mamun Bin Ibne Reaz, and Mohd Alauddin Mohd Ali. A review of smart homespast, present, and future. *IEEE Transactions on Systems, Man, and Cybernetics, Part C (Applications and Reviews)*, 42(6):1190–1203, 2012.

- [4] Zunaira Amjad, Saadia Batool, Hafsa Arshad, Komal Parvez, Mashab Farooqi, and Nadeem Javaid. Pigeon inspired optimization and enhanced differential evolution in smart grid using critical peak pricing. In *International Conference on Intelligent Networking and Collaborative Systems*, pages 505–514. Springer, 2017.
- [5] Hafsa Arshad, Saadia Batool, Zunaira Amjad, Mudabbir Ali, Syeda Aimal, and Nadeem Javaid. Pigeon inspired optimization and enhanced differential evolution using time of use tariff in smart grid. In *International Conference on Intelligent Networking and Collaborative Systems*, pages 563–575. Springer, 2017.
- [6] Hafsa Arshad, Munam Ali Shah, Hasan Ali Khattak, Zoobia Ameer, Assad Abbas, and Samee Ullah Khan. Evaluating bio-inspired optimization techniques for utility price estimation in fog computing. In *2018 IEEE International Conference on Smart Cloud (SmartCloud)*, pages 84–89. IEEE, 2018.
- [7] Mohammad Sadegh Aslanpour, Mostafa Ghobaei-Arani, and Adel Nadjaran Toosi. Auto-scaling web applications in clouds: A cost-aware approach. *Journal of Network and Computer Applications*, 95:26–41, 2017.
- [8] Flavio Bonomi, Rodolfo Milito, Jiang Zhu, and Sateesh Addepalli. Fog computing and its role in the internet of things. In *Proceedings of the first edition of the MCC workshop on Mobile cloud computing*, pages 13–16. ACM, 2012.
- [9] Zijian Cao, Jin Lin, Can Wan, Yonghua Song, Yi Zhang, and Xiaohui Wang. Optimal cloud computing resource allocation for demand side management in smart grid. *IEEE Transactions on Smart Grid*, 8(4):1943–1955, 2017.
- [10] Mingxi Cheng, Ji Li, and Shahin Nazarian. Drl-cloud: deep reinforcement learning-based resource provisioning and task scheduling for cloud service providers. In *Proceedings of the 23rd Asia and South Pacific Design Automation Conference*, pages 129–134. IEEE Press, 2018.
- [11] Nitish Chopra and Sarbjeet Singh. Deadline and cost based workflow scheduling in hybrid cloud. In *Advances in Computing, Communications and Informatics (ICACCI), 2013 International Conference on*, pages 840–846. IEEE, 2013.
- [12] Haibin Duan and Peixin Qiao. Pigeon-inspired optimization: a new swarm intelligence optimizer for air robot path planning. *International Journal of Intelligent Computing and Cybernetics*, 7(1):24–37, 2014.
- [13] Iztok Fister, Xin-She Yang, Simon Fong, and Yan Zhuang. Bat algorithm: Recent advances. In *computational intelligence and informatics (CINTI), 2014 IEEE 15th international symposium on*, pages 163–167. IEEE, 2014.
- [14] Zhaolu Guo, Haixia Huang, Changshou Deng, Xuezhi Yue, and Zhijian Wu. An enhanced differential evolution with elite chaotic local search. *Computational intelligence and neuroscience*, 2015:6, 2015.
- [15] Rabha W Ibrahim and Abdullah Gani. A mathematical model of cloud computing in the economic fractional dynamic system. *Iranian Journal of Science and Technology, Transactions A: Science*, 42(1):65–72, 2018.
- [16] Dong-Ki Kang, Seong-Hwan Kim, Chan-Hyun Youn, and Min Chen. Cost adaptive workflow scheduling in cloud computing. In *Proceedings of the 8th International conference on ubiquitous information management and communication*, page 65. ACM, 2014.
- [17] Sahil Kansal, Harish Kumar, Sakshi Kaushal, and Arun Kumar Sangaiah. Genetic algorithm-based cost minimization pricing model for on-demand iaas cloud service. *The Journal of Supercomputing*, pages 1–26, 2018.
- [18] Nasir Khan, Nadeem Javaid, Muhammad Khan, Ahmed Subhani, Abdul Mateen, and Arshad Iqbal. Harmony pigeon inspired optimization for appliance scheduling in smart grid. In *2018 IEEE 32nd International Conference on Advanced Information Networking and Applications (AINA)*, pages 1060–1069. IEEE, 2018.
- [19] Seong-Hwan Kim, Dong-Ki Kang, Woo-Joong Kim, Min Chen, and Chan-Hyun Youn. A science gateway cloud with cost-adaptive vm management for computational science and applications. *IEEE Systems Journal*, 11(1):173–185, 2017.
- [20] Yeongjin Kim, Jeongho Kwak, and Song Chong. Dual-side dynamic controls for cost



- minimization in mobile cloud computing systems. In *WiOpt*, pages 443–450, 2015.
- [21] Yeongjin Kim, Jeongho Kwak, and Song Chong. Dual-side optimization for cost-delay tradeoff in mobile edge computing. *IEEE Transactions on Vehicular Technology*, 67(2):1765–1781, 2018.
- [22] Ji Li, Yanzhi Wang, Tiansong Cui, Shahin Nazarian, and Massoud Pedram. Negotiation-based task scheduling to minimize users electricity bills under dynamic energy prices. In *Green Communications (OnlineGreencomm), 2014 IEEE Online Conference on*, pages 1–6. IEEE, 2014.
- [23] Ji Li, Yanzhi Wang, Xue Lin, Shahin Nazarian, and Massoud Pedram. Negotiation-based task scheduling and storage control algorithm to minimize user’s electric bills under dynamic prices. In *Design Automation Conference (ASP-DAC), 2015 20th Asia and South Pacific*, pages 261–266. IEEE, 2015.
- [24] Sandeep Mehmi, Harsh K Verma, and AL Sangal. Simulation modeling of cloud computing for smart grid using cloudsims. *Journal of Electrical Systems and Information Technology*, 4(1):159–172, 2017.
- [25] Seyedali Mirjalili, Seyed Mohammad Mirjalili, and Xin-She Yang. Binary bat algorithm. *Neural Computing and Applications*, 25(3-4):663–681, 2014.
- [26] Manish Pandey and Sachin Kumar Verma. Cost based resource allocation strategy for the cloud computing environment. In *Computing, Communication and Networking Technologies (ICCCNT), 2017 8th International Conference on*, pages 1–7. IEEE, 2017.
- [27] Suhradam Patel, Rakesh Kumar Bhujade, Amit Sinhal, and Sugney Kathrotia. Resource optimization and cost reduction by dynamic virtual machine provisioning in cloud. In *Advances in Computing, Communications and Informatics (ICACCI), 2013 International Conference on*, pages 857–861. IEEE, 2013.
- [28] Xuan-Qui Pham, Nguyen Doan Man, Nguyen Dao Tan Tri, Ngo Quang Thai, and Eui-Nam Huh. A cost-and performance-effective approach for task scheduling based on collaboration between cloud and fog computing. *International Journal of Distributed Sensor Networks*, 13(11):1550147717742073, 2017.
- [29] Shaolei Ren and Mihaela van der Schaar. Dynamic scheduling and pricing in wireless cloud computing. *IEEE Transactions on Mobile Computing*, 13(10):2283–2292, 2014.
- [30] Cristina Rottondi, Antimo Barbato, Lin Chen, Giacomo Verticale, et al. Enabling privacy in a distributed game-theoretical scheduling system for domestic appliances. *IEEE Trans. Smart Grid*, 8(3):1220–1230, 2017.
- [31] Nagamani H Shahapure and P Jayarekha. Load balancing with optimal cost scheduling algorithm. In *Computation of Power, Energy, Information and Communication (IC-CPEIC), 2014 International Conference on*, pages 24–31. IEEE, 2014.
- [32] YS Sheeja and S Jayalekshmi. Cost effective load balancing based on honey bee behaviour in cloud environment. In *Computational Systems and Communications (ICCCSC), 2014 First International Conference on*, pages 214–219. IEEE, 2014.
- [33] Harmanbir Singh Sidhu et al. Cost-deadline based task scheduling in cloud computing. In *Advances in Computing and Communication Engineering (ICACCE), 2015 Second International Conference on*, pages 273–279. IEEE, 2015.
- [34] Sukhpal Singh and Inderveer Chana. Q-aware: Quality of service based cloud resource provisioning. *Computers & Electrical Engineering*, 47:138–160, 2015.
- [35] Tobias Sturm, Foued Jrad, and Achim Streit. Storage cloudsims. In *Proceedings of the 4th International Conference on Cloud Computing and Services Science*, pages 186–192. SCITEPRESS-Science and Technology Publications, Lda, 2014.
- [36] Ling Wang, Haoqi Ni, Ruixin Yang, Minrui Fei, and Wei Ye. A simple human learning optimization algorithm. In *International Conference on Life System Modeling and Simulation and International Conference on Intelligent Computing for Sustainable Energy and Environment*, pages 56–65. Springer, 2014.
- [37] Qiufen Xia, Weifa Liang, and Wenzheng Xu. Throughput maximization for online request admissions in mobile cloudlets. In *Local Computer Networks (LCN), 2013 IEEE 38th Conference on*, pages 589–596. IEEE, 2013.

- [38] Mohammad Hossein Yaghmaee, Morteza Moghaddassian, and Alberto Leon Garcia. Power consumption scheduling for future connected smart homes using bi-level cost-wise optimization approach. In *Smart City 360*, pages 326–338. Springer, 2016.
- [39] Binxu Yang, Wei Koong Chai, Zichuan Xu, Konstantinos V Katsaros, and George Pavlou. Cost-efficient nfv-enabled mobile edge-cloud for low latency mobile applications. *IEEE Transactions on Network and Service Management*, 15(1):475–488, 2018.
- [40] Lei Yang, Jiannong Cao, Guanqing Liang, and Xu Han. Cost aware service placement and load dispatching in mobile cloud systems. *IEEE Transactions on Computers*, 65(5):1440–1452, 2016.
- [41] Xin-She Yang. A new metaheuristic bat-inspired algorithm. In *Nature inspired cooperative strategies for optimization (NICSO 2010)*, pages 65–74. Springer, 2010.
- [42] Chan-Hyun Youn, Min Chen, and Patrizio Dazzi. *Cloud Broker and Cloudlet for Workflow Scheduling*. Springer, 2017.
- [43] Jian Zhao, Hongxing Li, Chuan Wu, Zongpeng Li, Zhizhong Zhang, and Francis CM Lau. Dynamic pricing and profit maximization for the cloud with geo-distributed data centers. In *INFOCOM, 2014 Proceedings IEEE*, pages 118–126. IEEE, 2014.